

# STAINLESS STEEL P&T MOTORS, BRACKETS

## **NXCOL POLE MOUNT ADAPTOR**

Made of AISI 316L electropolished stainless steel

For pole diameters: from 110mm (4.3in) up to 150mm (5.9in)

Load rating: 50kg (110lb)

Dimensions: 180x196mm (7.0x7.7in)



NXCOL

## **NXCW CORNER MOUNT ADAPTOR**

Made of AISI 316L electropolished stainless steel

Load rating: 50kg (110lb)

Dimensions: 180x291mm (7x11.5in)



NXCW

## **NXFWBT EXTENSION BRACKET FOR PARAPET MOUNTING**

Made of AISI 316L electropolished stainless steel

Load rating: 70kg (154lb)

Height: 124mm (4.9in)

Suitable for MHXFWCA ball joint

Suitable to MVX housings only if coupled with MHXFWCA joint

Suitable for: NXWBPTH1



NXFWBT

## **NXWBPTH1 WALL BRACKET FOR NXPTH**

Bracket for NXPTH

Suitable for: NXCOL, NXCW, NXFWBT

Made of AISI 316L electropolished stainless steel

Load rating: 70kg (154lb)

Length: 596mm (23.5in)



NXWBPTH1

## TECHNICAL DATA

### NXCOL POLE MOUNT ADAPTOR

Suitable for NXWBS1, NXWBL, NXWBPTH1

Made of AISI 316L electropolished stainless steel

For pole diameters 110-150mm (4.3-5.9in)

Load rating: 50kg (110lb)

Unit weight: 3.3kg (7.3lb)

#### PART NUMBER

NXCOL AISI 316L stainless steel pole adapter module

#### PACKAGE

Model Number	Weight	Dimensions (WxHxL)	Master carton
NXCOL	3.5kg (7.7lb)	14x25.5x20cm (5.5x10x7.9in)	8

### NXCW CORNER MOUNT ADAPTOR

Suitable for NXWBS1, NXWBL, NXWBPTH1

Made of AISI 316L electropolished stainless steel

Load rating: 50kg (110lb)

Dimensions: 180x291mm (7x11.5in)

Unit weight: 1.2kg (2.6lb)

#### PART NUMBER

NXCW AISI 316L stainless steel corner adapter module

#### PACKAGE

Model Number	Weight	Dimensions (WxHxL)	Master carton
NXCW	1.3kg (2.8lb)	24x32x24.5cm (9.4x12.6x9.6in)	5

### NXFWBT EXTENSION BRACKET FOR PARAPET MOUNTING

Suitable for: MHXWFWCA

Suitable to MVX housings only if coupled with MHXWFWCA joint

Suitable for NXWBPTH1

Made of AISI 316L electropolished stainless steel

Load rating: 70kg (154lb)

Height: 124mm (4.9in)

Unit weight: 0.9kg (2lb)

#### PART NUMBER

NXFWBT AISI 316L stainless steel parapet mounting bracket

#### PACKAGE

Model Number	Weight	Dimensions (WxHxL)	Master carton
NXFWBT	1kg (2.2lb)	10x16x23cm (4x6x9in)	-

### NXWBPTH1 WALL BRACKET FOR NXPTH

Bracket for: NXPTH

Suitable for: NXCOL, NXCW, NXFWBT

Made of AISI 316L electropolished stainless steel

Load rating: 70kg (154lb)

Length: 596mm (23.5in)

Unit weight: 4.8kg (10.6lb)

#### PART NUMBER

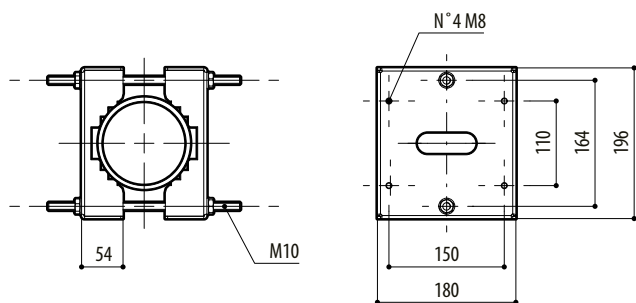
NXWBPTH1 Wall bracket for stainless steel P&Ts

#### PACKAGE

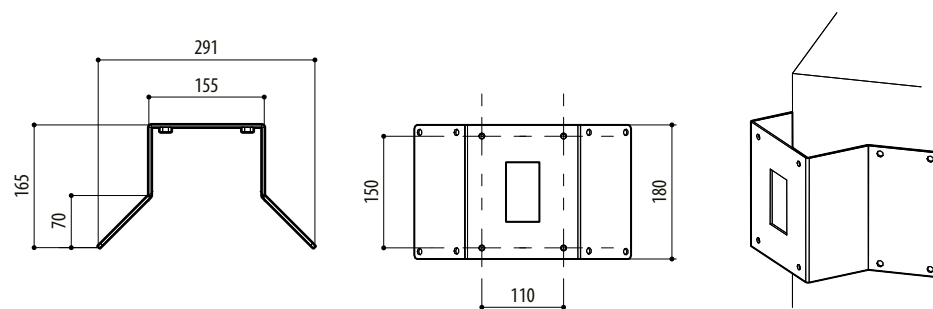
Model Number	Weight	Dimensions (WxHxL)	Master carton
NXWBPTH1	5kg (11lb)	18x60x15.5cm (7.1x23.6x6.1in)	4

## TECHNICAL DRAWINGS

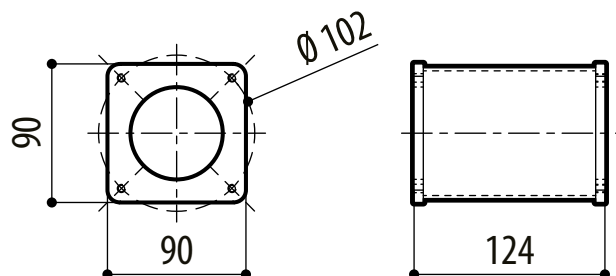
The dimensions of the drawings are in millimetres.



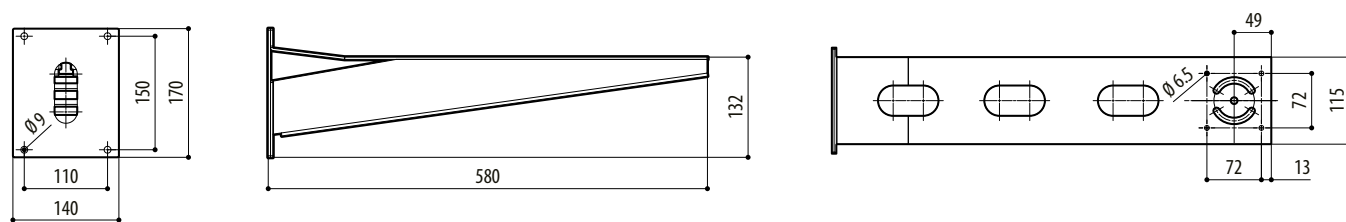
NXCOL



NXCW



NXFWBT



NXWBPTH1